

CONSOLE ACCESSORIES

CONSOLES & ACCESSORIES

POWER OUTLETS

CA-0101



Dual outlet 12V power accessory, individually switched, fused and backlit. 15 Amp max per output.

CA-0102



Triple outlet 12V power accessory with lighter plug. 15 Amp max per output.

CA-0103



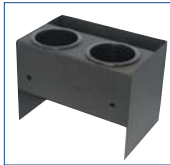
Triple outlet 12V power accessory mounts in console.



ELECTRONICS CO. LTD.
EMERGENCY VEHICLE SOUND, LIGHTING & EQUIPMENT

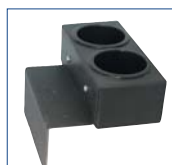
CUPHOLDERS

CA-0106



Dual cupholder w/clipboard holder compartment (mounts to rear of console).

CA-0106WM



Dual cupholder with wall style mounting bracket.

CA-0107



Dual cupholder (mounts in console)

CA-0107LS



Dual cup holder with one regular sized cup and one extra large cup.

CA-0117



Dual cupholder with wall style mounting bracket.

ARMRESTS

CA-0110



Adjustable armrest. CA-0115 (not shown) same as CA-0110 with adjustable brackets to fit most makes and models of consoles.

CA-0111



Adjustable armrest with slide-out note pad. CA-0116 (not shown) Same as CA-0111 /adjustable brackets to fit most makes and models of consoles.

CA-0118



Adjustable armrest w/slide-out note pad. Secures to equipment floor mounting plate.

CA-0119



Adjustable armrest. Secures to equipment floor mounting plates.

CA-0124



Adjustable armrest with the rear mounted clip board holder.

CA-0211



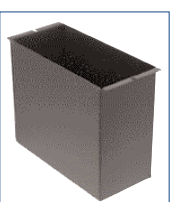
CA-0211 - Pentax Pocket Jet 200 / Pocket Jet 3+ Printer Armrest is designed to enclose and protect the PJ200 printer & paper spool. It is compact and ideally suited to mount in the confined space between the driver and passenger seats of all mid and full sized vehicles.

CA-0210 Same as CA-0211 but mounts to the back of the D&R console.



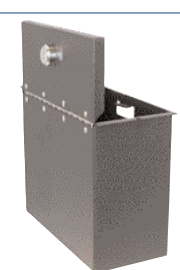
STORAGE POCKETS

CA-0104



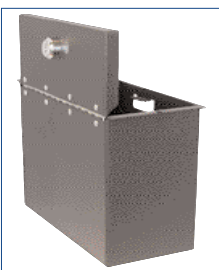
Ticket book holder. Mounts in console. Dimensions: L-8"/H-6"/W-3.5" CA-0104S L-8"/H-3"/W-3.5"

CA-0105



Ticket book holder w/keyed locking lid. Dimensions: L-8"/H-6"/W-3.5"

CA-0105M1



Ticket book holder w/keyed locking lid. Mounts in console. Dimensions: L-8"/H-6"/W-7"

CA-0128



Clipboard holder. Side mounting VAN console.

CA-0125



Sleek low profile LED map light. CA-0125(12")-Clear CA-0126(18")-Red

LED MAP LIGHTS

CONSOLES & CONSOLE ACCESSORIES

www.dandrelectronics.com

D&R ELECTRONICS CO. LTD.

8820 GEORGE BOLTON PKWY. / BOLTON, ONTARIO L7E 2Y4

TEL: 905-951-9997 / Toll free (US only): 1-800-538-7338 / FAX: 905-951-0019

www.dandrelectronics.com

ISO 9001:2000
REGISTERED COMPANY

SWITCHRITE EQUIPMENT CONSOLES

D&R Switchrite equipment consoles are available for many applications and offer all the features and qualities synonymous with D&R products-robust, versatile and functional. Consoles come complete with mounting holes for map lights, mic clips, interchangeable faceplates and console accessories. All consoles can be used with computer mounts. Easy installation and universal mounting among vehicles (Ford, GM, Chrysler) results in added value and reduced costs as equipment adapts to the changing needs of fleets.

SRCCHRGR-06



SRCCHRGR-06 Designed to fit a Charger and Magnum. With a contour slope that mounts below the dash to allow easy access to your control center. A floorplate is not required to install this console in a car. This 26" long console is capable of holding up to 6 pieces of equipment.

SRCCHRGR-06B (deep)



Designed to fit a Charger and Magnum. No floorplate is required to install this console in a car. This 26" long console is capable of holding up to 6 pcs. of equipment.

SRCFCV



The SRCFCV is designed to fit a Ford Crown Vic. With a contour slope that mounts below the dash to allow easy access to your control center. Capable of holding up to 4 pieces of equipment. Dimensions: Extrusion Length-14", H-9.25", W-8.40"

SRC-EXPL-06



Designed for floor shift Ford Explorer and to replace factory console. Secures to factory bolts, features gear shift cutout, dual 12-Volt outlets and dual cupholder. This console is capable of holding up to 4 pieces of equipment.

SRCIMP-06



Designed to fit a 2006 Chevy Impala. With a contour slope that mounts below the dash to allow easy access to your control center. This 19.95" long console is capable of holding up to 4 pieces of equipment.

SRC7



Small 7-inch console popular for use in bench seat vehicles and pickup trucks, where limited space is available or under-cover vehicle applications. Capable of holding 2 pieces of equipment.

SRC9SC



SRCFCV-B (compact - NOT shown)

Capable of holding up to 3 pieces of equipment. Dimensions: Extrusion Length-10.50", H-8.59", W-8.40"

A 9-inch console with a 40-degree down slope. Designed to fit close to the dash of a car or SUV and ability to fit up to 3 pieces of equipment in a limited space area. Due to the design size, only remote mount equipment or very shallow depth components are recommended.

SRC11S



Mid sized console-popular for use, both in between the seat configurations and with bench seats where limited space is available. Capable of holding up to 3 pieces of equipment. This console has a rear slope from front to back.
*Available also for Vans, model - SRC11RV (height increases by 4", no slope)

SRC11SC



A 11-inch console with a 40-degree down slope. Designed to fit close to the dash of a car or SUV and ability to fit up to 3 pieces of equipment in a limited space area. Due to the design size, only remote mount equipment or very shallow depth components are recommended.

SRC14R



A 14-inch popular console. The flat shape allows for mounting up to 4 pieces of equipment.
*Available for vans model SRC14RV (height increases 4")

SRC14RS



A 14-inch console with a front to rear sloped profile. This shape provides for better visibility of equipment while maintaining a functional equipment platform. Capable of holding up to 4 pieces.

SRC18R



An 18-inch console that provides a flat mounting surface capable of holding 5 or 6 pieces of equipment.

SRC SUV



An 18-inch console with a front to rear sloped profile and capable of holding 5 or 6 pieces of equipment. This console is specifically designed to accommodate the larger sport utility vehicles such as Tahoe, Suburban and Expedition. Includes a side compartment providing storage space for clipboards and two smaller pockets to accommodate accessories. The SRC SUV design allows for easy equipment operation by both driver and passenger.
* SRC SVR has no slope